



Milford **LIVE**
...Let Us Tell Your Story

XLARGE

3-TOPPING PIZZA
+2 liter Soda & Sweet Ending

Pickup
or Delivery

\$20

CALL 422-5525

GOVERNMENT CULTURE BUSINESS FOOD EDUCATION HEALTH POLICE & FIRE SPORTS

VISIT MILFORD

<http://milfordlive.com/>

[ABOUT](#) [CALENDAR](#) [WEEKLY REVIEW](#) [CONTACT US](#) [ADVERTISING](#) [MLIVE IN THE NEWS](#) [SUBSCRIBE TO REVIEW](#)



Field Hockey Defeats Sussex Tech 5-0 >>

By Kevin Eickman Heading into this season Milford...



GOVERNMENT & POLITICS

Police Recognized, Airport Rd Approved at Council >>



By Terry Rogers On Monday, September 12, Milford City Council recognized the achievements of several police officers at their

regular...

[Sep 18 2016 / No Comment / Read More >>](#)

City Releases 2016 Fall Update >>



Released by the City of Milford From the Desk of Mayor Bryan W Shupe Fall is in the air, the...

[Sep 18 2016 / No Comment / Read More >>](#)

Council to Learn About Bayshore Byway >>



By Terry Rogers On Monday, September 26, Milford City Council will view a presentation by DeIDOT regarding the proposed expansion...

[Sep 18 2016 / No Comment / Read More >>](#)

DE Primary Election Results >>



STATE OF DELAWARE
DEPARTMENT OF ELECTIONS Local Races According to the State of

Delaware's Sports Station
ESPN
930AM • 104.1FM
BRINGS YOU MILFORD HIGH SCHOOL Buccaneers

Game Day
Every Friday
Home or AWAY

ESPN930.COM

CULTURE



SODE Young Athletes Program Begins, Sept 21 >>

Special Olympics of Delaware (SODE) will begin a new tradition in Milford on Wednesday, September 21 with the introduction of their Young Athletes Program (YAP). YAP is an innovative inclusive...

[Sep 13 2016 / No Comment / Read More >>](#)

Vinyard Shipyard Designated as Historic



Social Pets are Happy Pets

Social skills will increase and your Fur-Baby will learn how to play & interact with other dogs in a safe, fun, & meaningful way. Boredom behaviors caused by lack of activity, inadequate mental & physical stimulation are virtually eliminated.

Monday-Friday
7am-7pm

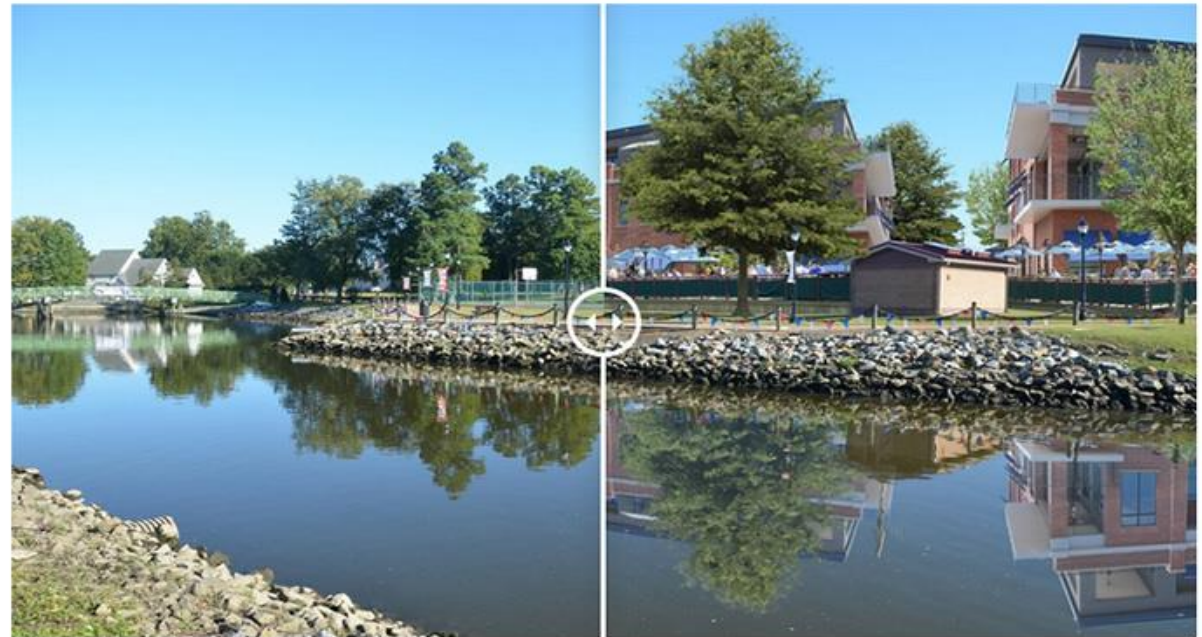
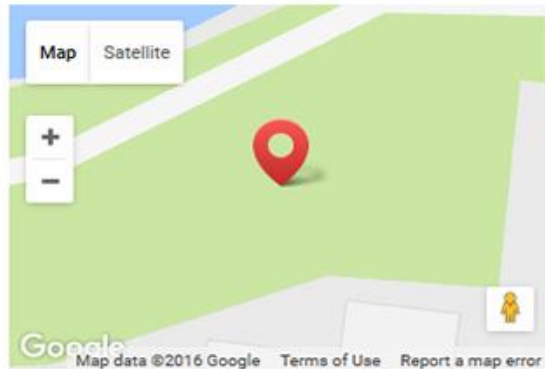
Saturday 10am-5pm
Sunday Hotel Guest Only

Call now to schedule a day in the park!
(302) 725-5078

[Join the Pack](#)

<https://furbabyboutique.com/daycare/>





The riverwalk along the Mispillion River is an unmistakable asset that provides a pedestrian circulation route and ordering system to the downtown area. At this location a basketball court exists that could be relocated to make room for a significant infill development to address stated needs for downtown, namely additional residential options. Moreover, by coupling residential uses with retail uses, this section of the riverwalk would become activated like the other side of the river and the additional “eyes on the riverwalk” would promote safety and likely mitigate the current vagrant issue plaguing this area.

The first floors of any proposed infill development should include restaurant and retail uses that front the riverwalk. By including outdoor dining ‘decks’ for the restaurants, the riverwalk would be further activated as people like to “see and be seen.” The upper two floors should include housing options such as apartments and/or condominiums as preferred by the developer. The third floor should step back from the second to both introduce balcony/rooftop deck options as well as to cause the dominant architectural form to be two stories in height similar to most of the buildings in downtown Milford.