

Sussex Demographic and Labor Market Trends

Quick Facts

Ed Simon

(302) 672-6845

edward.simon@state.de.us

October 2015

INNOVATION

Sussex County
TODAY
&
TOMORROW
Conference

Introduction

The economy and job market in Sussex has shown improvement in recent years. With low taxes and a favorable climate, Sussex has continued to be a popular county for both tourists and retirees. Our demographics have spurred job growth in many service industries. Overall our industry and occupational patterns are more diverse than what many people think. Sussex does have numerous industries and occupations that pay well above the average.

INNOVATION



Sussex Overview

- **Sussex job growth continues to rise**
 - Growth rate has been faster than DE and US
 - Last five years – Sussex had a net gain of 5,000 jobs, about 8% growth.
 - Job gains have been broad based with gains in nearly all sectors
- **Unemployment**
 - Substantial improvement in recent years
 - Sussex Unemployment rate: 2010, 8.5%; 2015, 4.5%
- **Tourism – Continues to grow**
 - \$1,636.7 (Millions of \$) Sussex Expenditures; 39% of the State total

INNOVATION

Overview (Continued)

- Real Estate
 - Existing home sales for 2015 are well ahead of the same period for 2014
 - 2,049 homes were sold during the first half of 2015, an increase of 49% over the same period of 2014
 - Thus far in 2015 building permits for single family homes in Sussex is keeping pace with what occurred in 2014
- Agriculture (Latest county data is from the 2012 Census of Agriculture)
 - Market Value (Sussex) \$921 Million
 - Sussex #1 broiler producing county in U.S.

INNOVATION



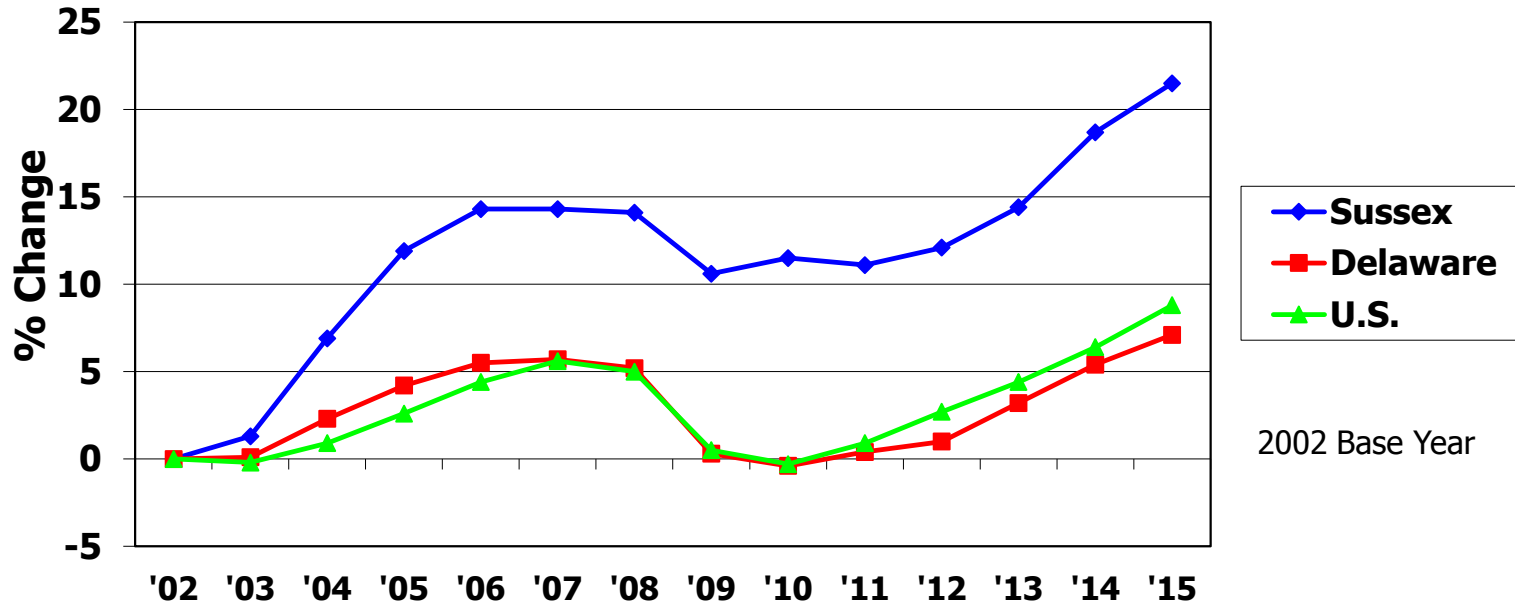
Unemployment Trend

- During the past couple of years the rates are showing major improvement.

Year	Sussex	DE	US
2010	8.5%	8.4%	9.6%
2011	7.7%	7.5%	8.9%
2012	7.3%	7.2%	8.1%
2013	6.8%	6.7%	7.4%
2014	5.7%	5.7%	6.2%
2015 Est	4.5%	4.7%	5.3%

Source: U.S. Dept. of Labor, Bureau of Labor Statistics

Sussex Jobs Are Increasing



Sussex Trends: Jobs grew faster at first and then declined more slowly. During the past few years Sussex has had modest job growth.

Source: U.S. Dept. of Labor, Bureau of Labor Statistics

Agriculture in Sussex

- Sussex has more acres of farm land than New Castle and Kent combined.
- From 2007 to 2012 the number of farms declined from 1,374 to 1,214; but average size of farms rose from 196 acres to 224 acres.
- From 2007 to 2012 farm acreage in Sussex rose slightly - from 269,464 to 272,232 acres.
- The market value of Agr. Products sold was \$921 million
- Sussex County is the number one broiler producing county in the U.S. *Source: 2012 Census of Agriculture.*
- Poultry is our #1 farm commodity representing over 70% of Sussex Market value of Agr. Products sold.
- In the Delmarva Peninsula, Sussex remains as a key leader in the production of Soybeans, corn and wheat.

INNOVATION



Market Value of Agr. Products Sold - \$921 Million in Sussex

- \$249 Million – Crops
- \$672 Million – Livestock, Poultry

Poultry and Eggs represent about 71%
Of total Agr. Products sold in Sussex

People

Demographic Trends

I've included some charts with population data. I can provide additional or alternative data if you wish.

INNOVATION

Sussex County
TODAY
&
TOMORROW
Conference

In an Average Month in Sussex . . .

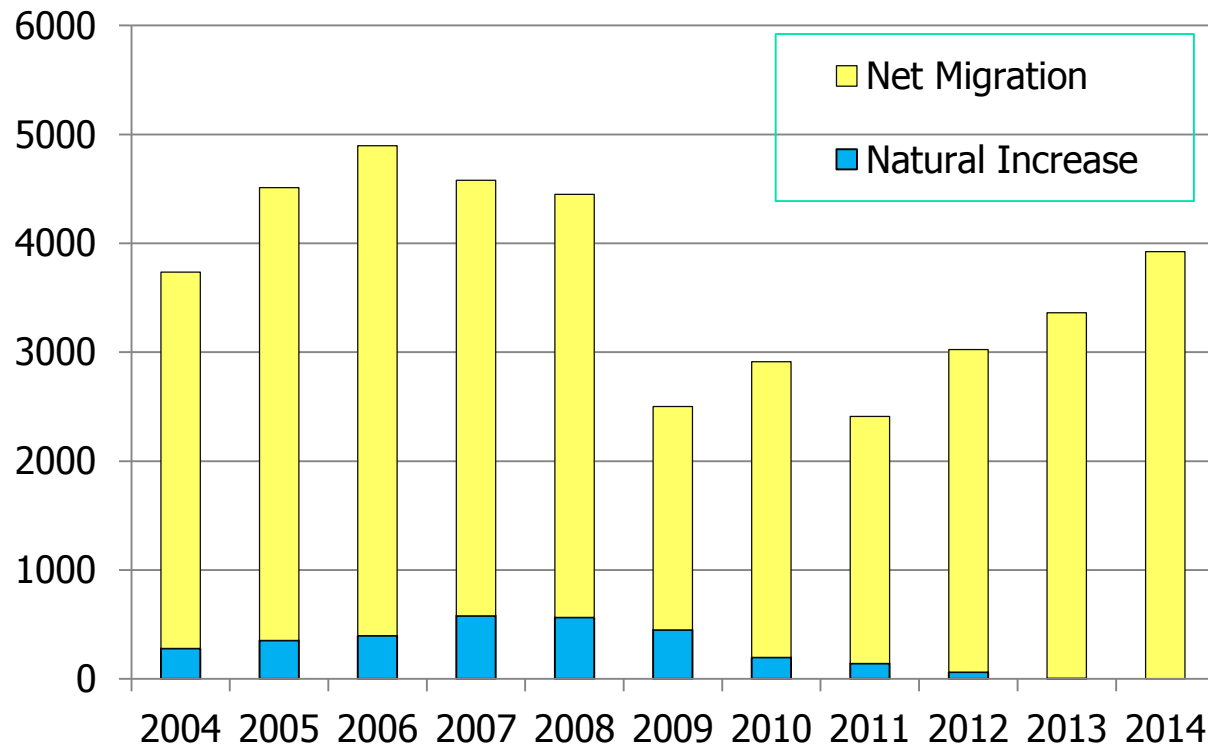
- 192 Persons are born
- 195 Persons die
- 327 Persons move here from another area

Source: U.S. Census Bureau (7/13 to 7/14)

INNOVATION

Sussex County
TODAY
&
TOMORROW
Conference

Sussex Population Growth is Steady (Annual Change)

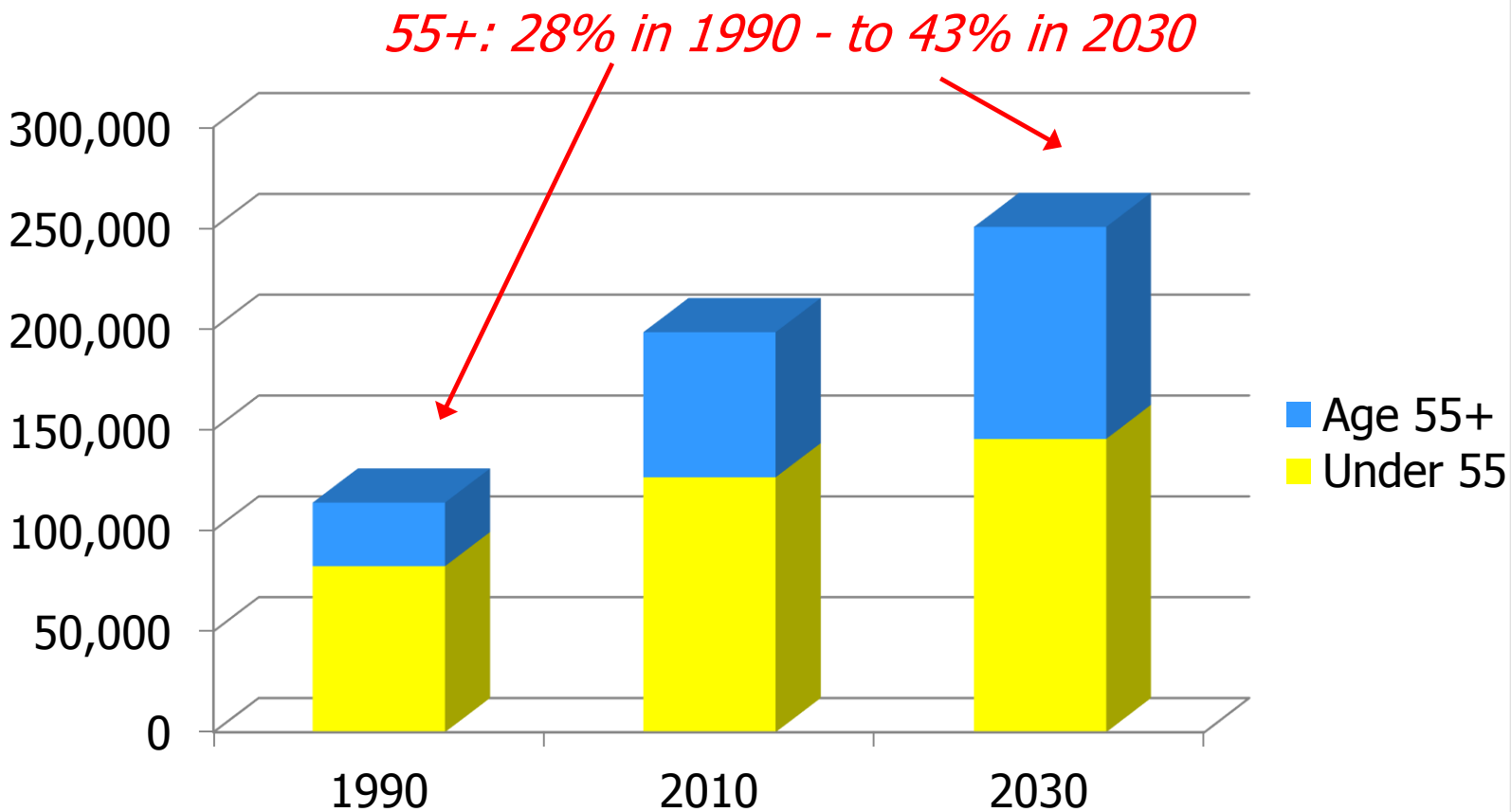


Source: U.S. Census Bureau

INNOVATION

Sussex County
TODAY
&
TOMORROW
Conference

Long Term Population Trends – Sussex



Source: Delaware Population Consortium

INNOVATION

Sussex County
TODAY
&
TOMORROW
Conference

Median Age (Sussex has a much higher median age)

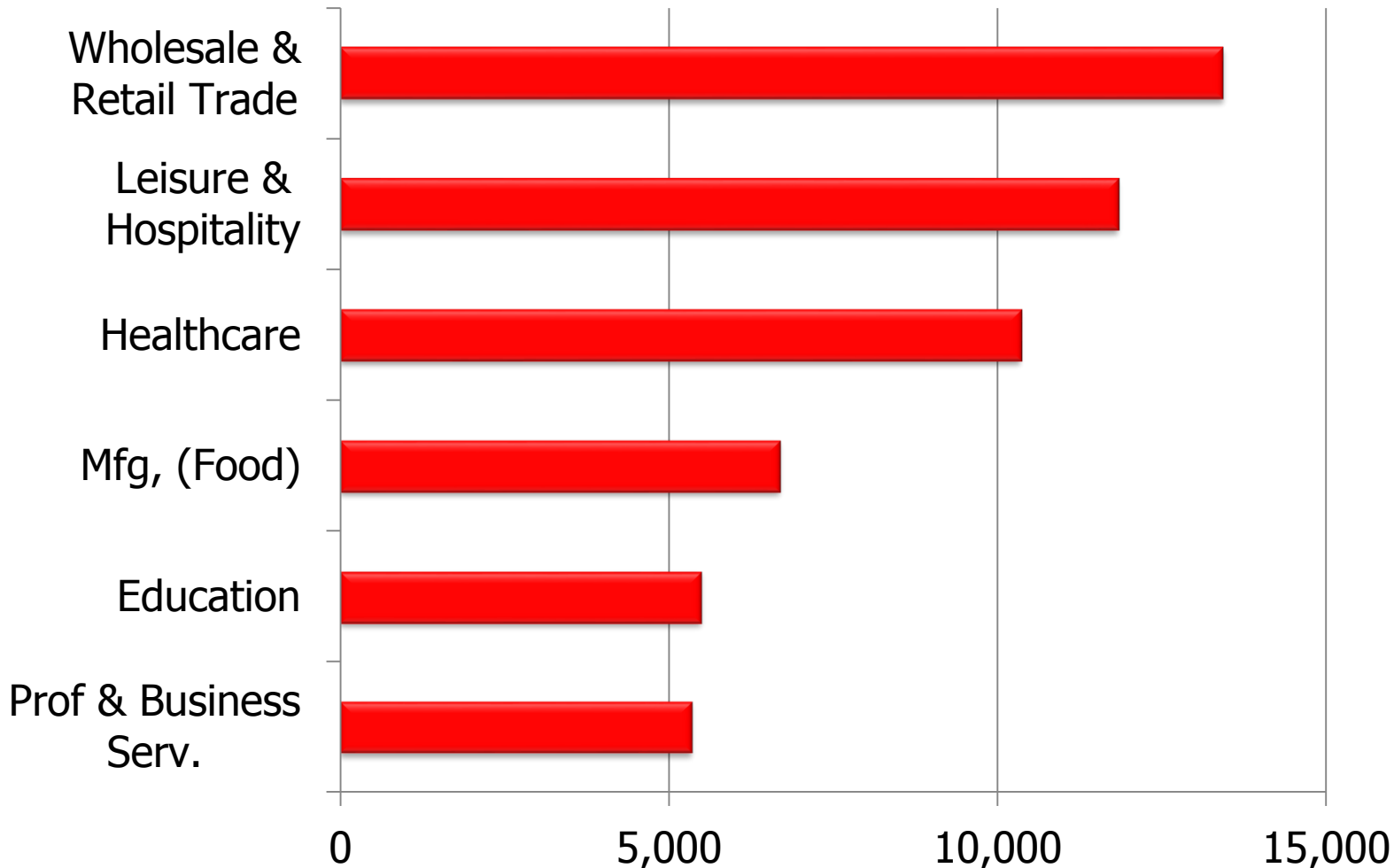
Area	Median Age
Sussex County	45.9
Kent County	36.7
New Castle County	37.2
Delaware	38.9
U.S.	37.3

Source: American Fact Finder



INNOVATION

Major Sussex Industry Groups (2014 Employment)

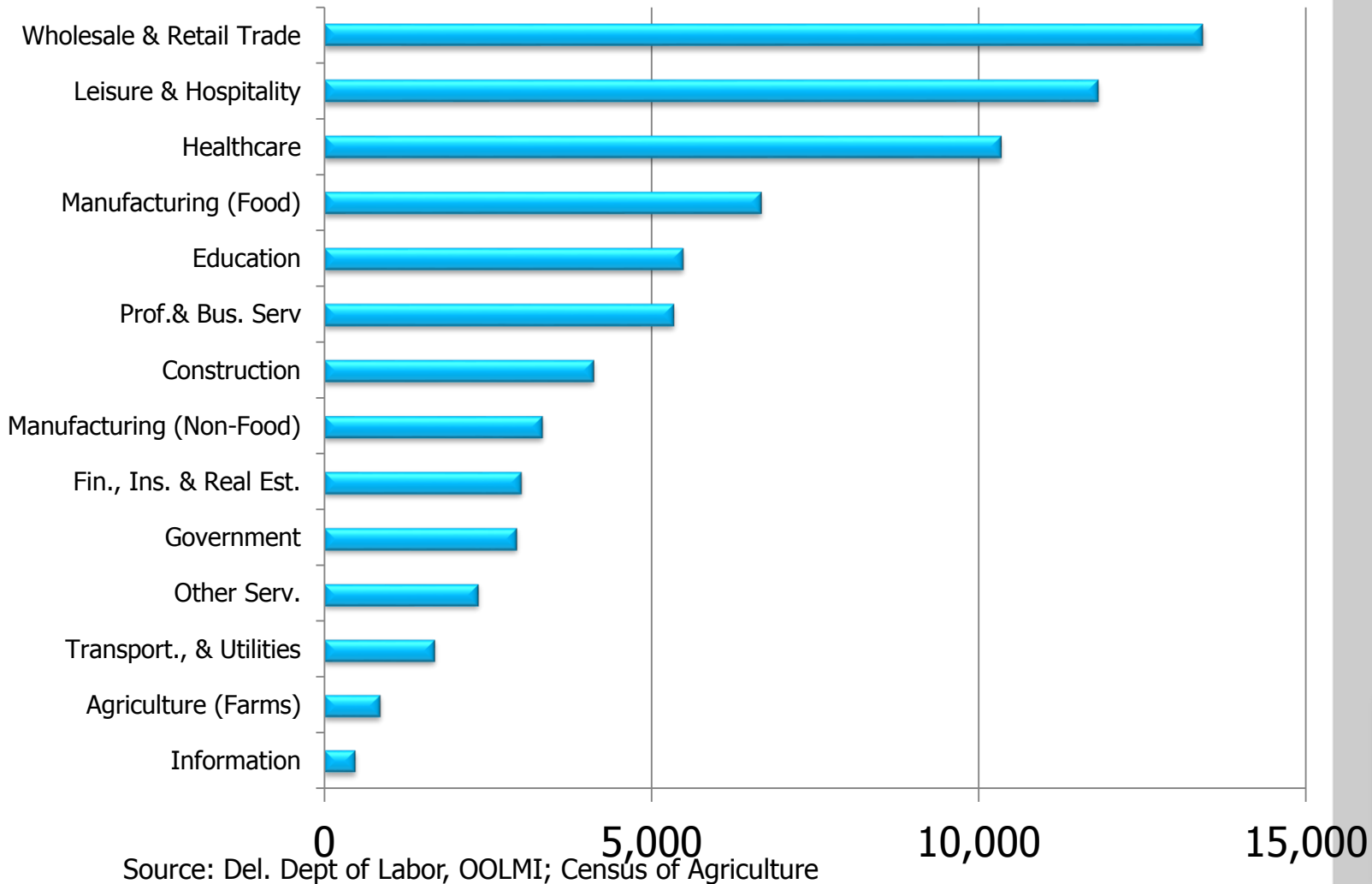


Source: Del. Dept of Labor, OOLMI

INNOVATION



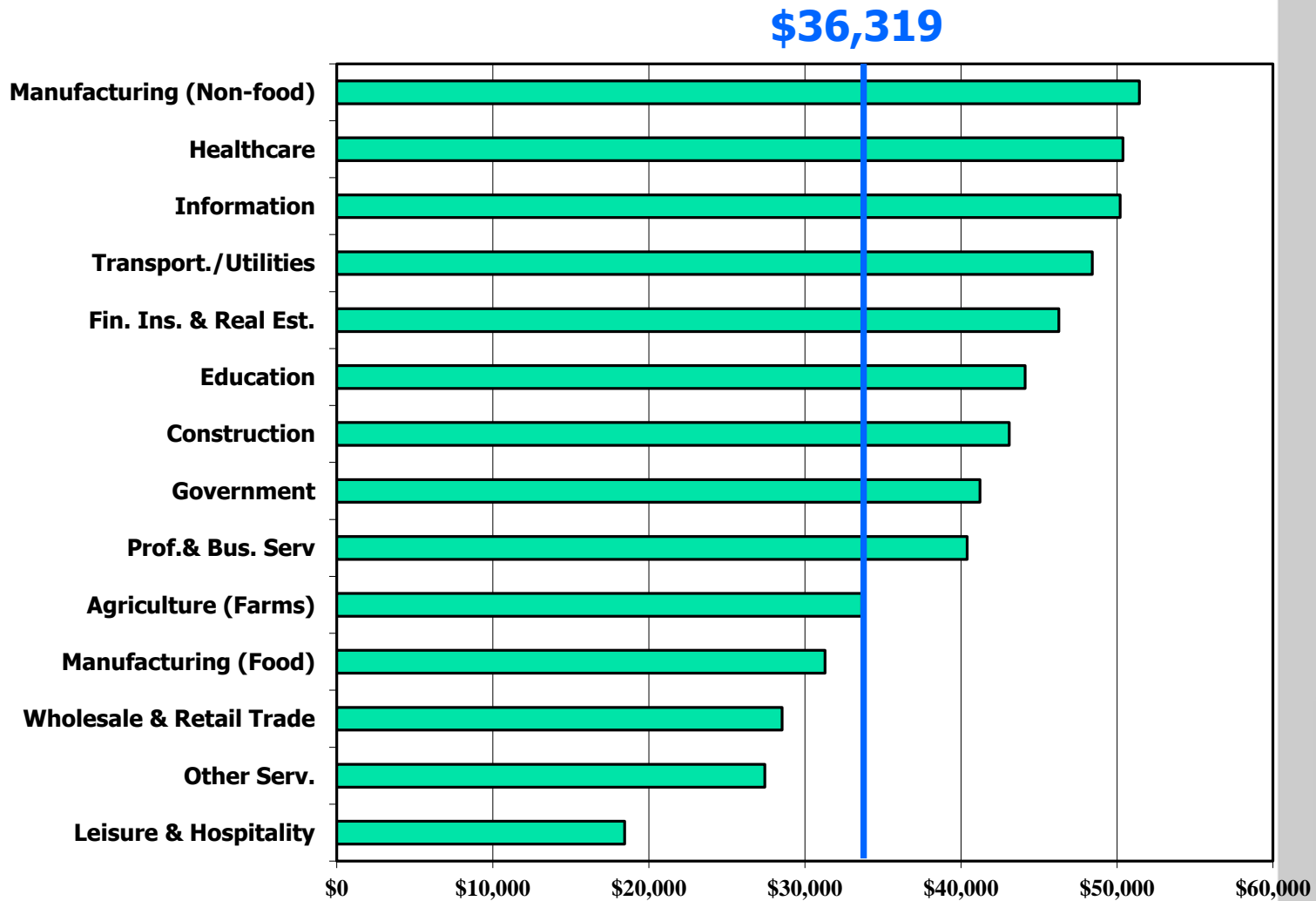
Where Sussex Works (2014)



INNOVATION



Average Annual Wage by Ind. Sussex (2014)



INNOVATION

Largest Occupational Groups Sussex 2014

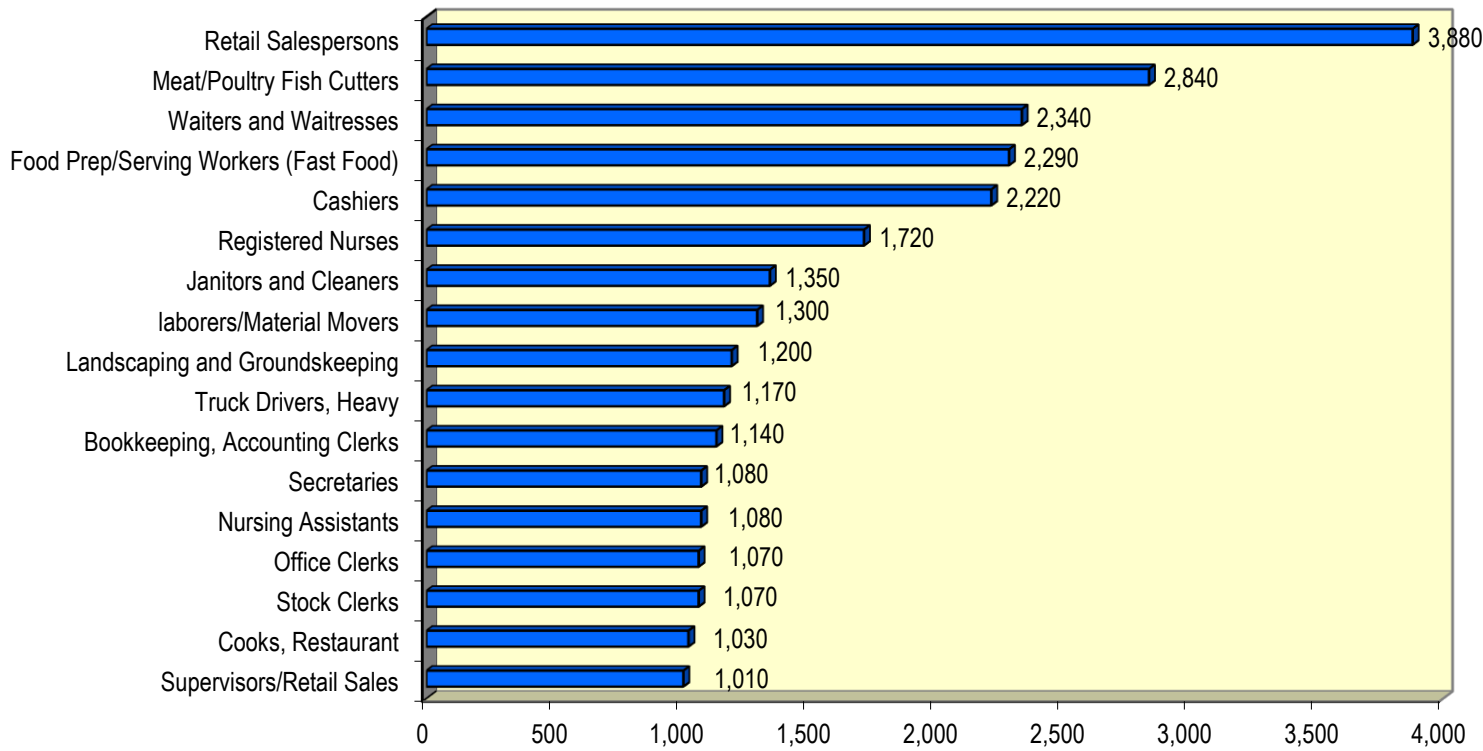
Occupational Group	Employment	Annual Avg. Wage
Food Preparation and Serving Related	10,460	\$22,240
Office and Administrative Support	10,230	\$32,860
Sales and Related	9,130	\$33,990
Production	6,540	\$29,910
Transportation and Material Moving	4,920	\$30,220
Healthcare Practitioners and Technical	4,910	\$74,640
Education, Training, and Library	4,540	\$47,010
Building and Grounds Cleaning and Maintenance	3,600	\$26,600
Installation, Maintenance, and Repair	3,200	\$43,140
Construction and Extraction	3,110	\$40,080
Healthcare Support	2,370	\$28,100
Management	1,670	\$11,430
Business and Financial Operations	1,540	\$62,550

U.S. Dept. of Labor, Bureau of Labor Statistics, (BLS)

INNOVATION

Sussex County
TODAY
&
TOMORROW
Conference

Largest Specific Occupations – Sussex 2014

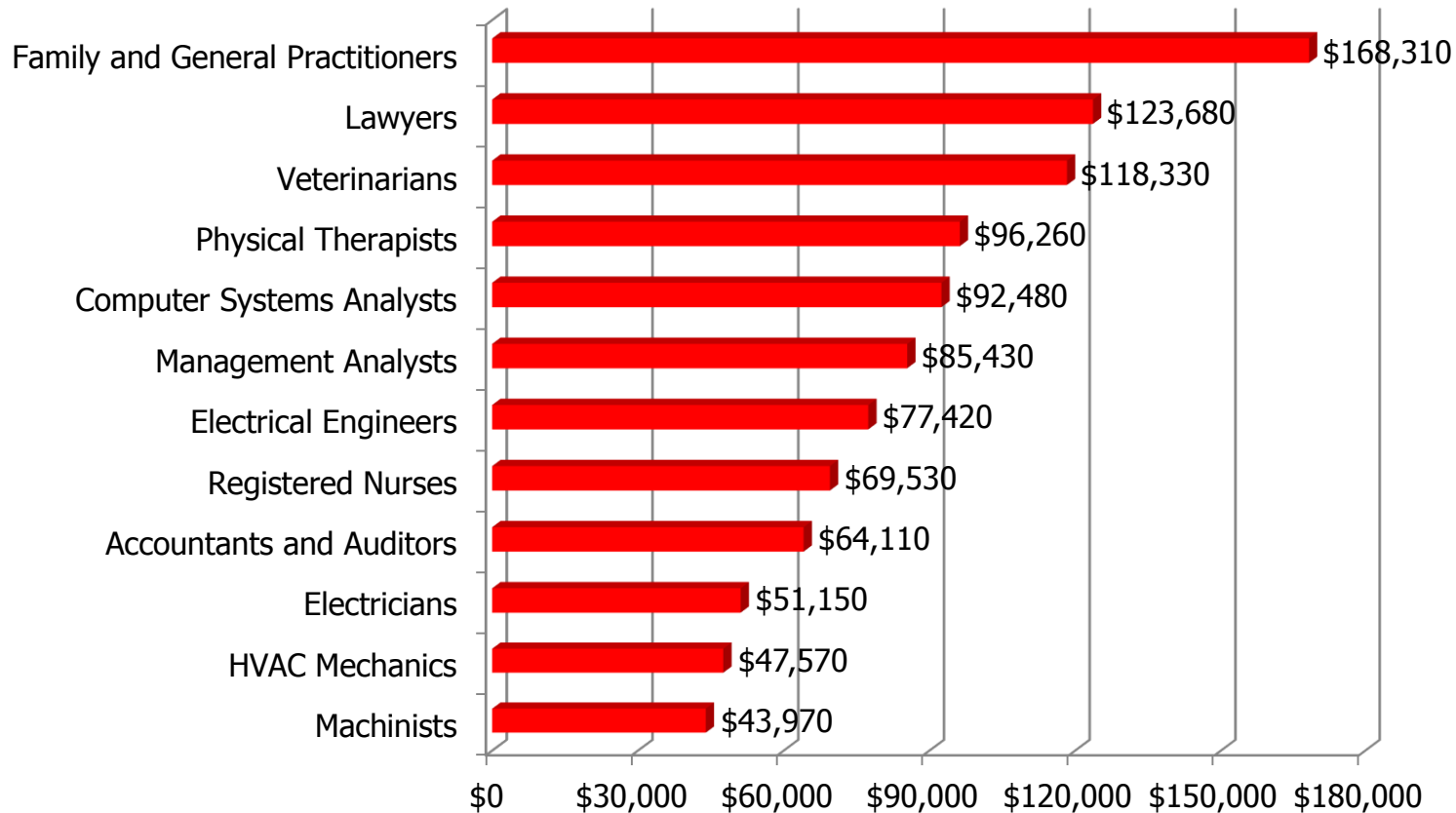


Source: U.S. Dept. of Labor, Bureau of Labor Statistics

INNOVATION



Ann. Wages for Selected Occupations – Sussex 2014



Source: U.S. Dept. of Labor, Bureau of Labor Statistics

INNOVATION

